



## Kevin Sojoodi

Personal Real Estate Corporation  
Land and Investment

**phone** 604 691 6661

**fax** 604 691 6688

**email** ksojoodi@naicommercial.ca

## Qualifications & Experience

- ▶ MBA, American University of Dubai, Dubai, UAE
- ▶ Real Estate Sales and Marketing Diploma, Real Estate Academy, Dubai, UAE
- ▶ Real Estate Licensing Program, Sauder School of Business, UBC
- ▶ Real Estate Board of Greater Vancouver (Commercial Division)
- ▶ BC Real Estate Association

## Scope of Service Experience

Kevin started his real estate career in 2007 in Dubai after finishing his MBA from American University of Dubai. Working with developers in Dubai, he gained a solid foundation in real estate development and sales before moving to Europe. In Europe, he continued his career working with several high-end commercial real estate companies and developers, where he honed his skills in sales, negotiation, and client management. He moved to Vancouver, BC in 2015 and since then he has successfully closed development lands and multi family transactions. His main area of expertise is development land, multi family investment and industrial properties.

## Sample Transactions

- ▶ 519 Cottonwood Ave, Coquitlam (High-rise Site)
- ▶ 815 Fourth Ave, New Westminster (Multi-family development site)
- ▶ 39449 Queens Way, Squamish (Industrial development site)
- ▶ 38108 Cleveland Ave, Squamish (Mixed-use development site)
- ▶ 2932 Chesterfield Ave, North Vancouver (Townhouse Development site)

# NAI SAMPLE LAND SALES

2022 – 2023



## 44-Unit Apartment Building with Development Potential

6540 Telford Ave, Burnaby, BC

**Sale Price: \$28,000,000**



## High-Rise Development Site

584, 588, 592, 596 Kemsley Ave, 589, 593 Westley Ave, 648, 650 Gardena Dr, Coquitlam, BC

**Sale Price: \$24,515,511**



## 43,632 SF Medium Density Site

564, 568, 574 Harrison Ave & 565, 569, 575 Kemsley Ave, Coquitlam, BC

**Sale Price: \$15,051,626**



## 30,781 SF High-Rise Site

631, 633, 635 & 637 Elmwood St, Coquitlam, BC

**Sale Price: \$12,653,256**



## 53,068 SF Townhome Site

591, 595, 599, 605 & 611 Harrison Ave, Coquitlam, BC

**Sale Price: \$12,325,120**

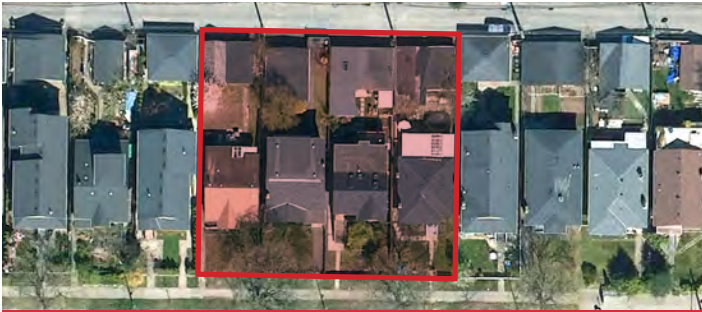


## 23,526 SF Redevelopment Site

6525 & 6575 Oak St, Vancouver, BC

**Sale Price: Confidential**





LAND

### Six-Storey Development Site in Grandview-Woodland

2037, 2045, 2055, 2061 E Broadway, Vancouver, BC

**Sale Price: \$11,400,000**



LAND

### Townhome Development Site

597, 605, 613, 621 Foster Avenue, Coquitlam, BC

**Sale Price: \$14,235,000**



LAND

### High Rise Development Site

600, 604, 606, 612, 616 Kemsley Ave, 595, 597, 601, 605, 609 Westley Ave & 639 Elmwood St, Coquitlam

**Sold Pending Completion**



LAND

### Medium Density Development Site

725 & 729 Alderson Ave, 263 Allison St, Coquitlam, BC

**Sale Price: \$5,666,180**



LAND

### High Density Redevelopment Site

3540 Westwood Street Port Coquitlam, BC

**UNDER NEGOTIATION**



# NAI SAMPLE LAND SALES

2020 – 2021



## **3.15 AC Mixed-Use Commercial/ Residential Site**

9080, 9086, 9100 Odlin Rd, 4420 &  
4440 Garden City Rd, Richmond

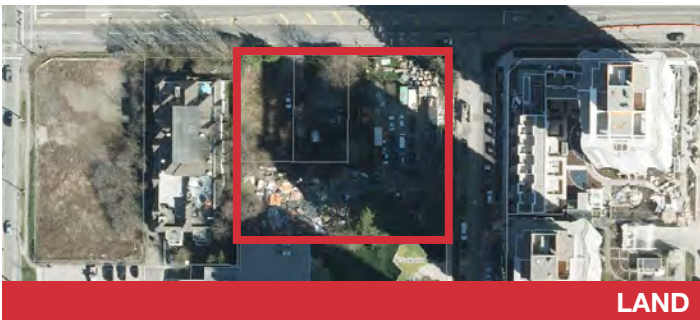
**Sale Price: \$30,000,000**



## **98,697 SF Medium Density Site**

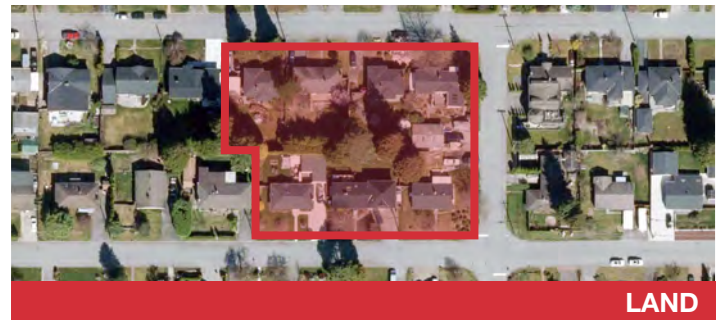
580 – 600 Harrison Ave, 581 – 601  
Kemsley Ave, Coquitlam

**Sale Price: \$28,292,545**



## **46,964 SF, 24-Storey Surrey High-Rise Site, 10375 133<sup>rd</sup> St & 13242, 13252-104<sup>th</sup> Ave, Surrey**

**Sale Price: \$18,000,000**



## **53,406 SF Medium Density Site**

604 – 616 Harrison Ave, 605 – 615  
Kemsley Ave, Coquitlam

**Sale Price: \$17,436,828**



## **1.923 Acre Mixed-Use Commercial/Residential Site**

9151 Alexandra Rd, Richmond

**Sale Price: \$17,250,000**



## **5.67 AC Light Industrial/ Commercial Development Site**

830 McCallum Road, Langford

**Sale Price: \$16,601,760**





LAND

### 214.5 Acres of Mixed Residential Development Land

Kingsview at Maple Bay Development Lands, North Cowichan, BC

**Sale Price: \$16,000,000**



LAND

### Redevelopment Site

3205 Arbutus Street, Vancouver, BC

**Sale Price: Confidential**



LAND

### Development Site

574 & 582 Foster Ave, Coquitlam, BC

**Sale Price: \$6,200,000**



LAND

### 4.56 Acre Land

4101 & 4125 Jingle Pot Road, Nanaimo, BC

**Sale Price: \$4,730,000**



LAND

### 37.54 Acre Land

2434 264<sup>th</sup> Street, Aldergrove, BC

**Sale Price: \$4,400,000**



LAND

### 40.41 Acre Land

5208 224 Street, Langley, BC

**Sale Price: \$4,300,000**